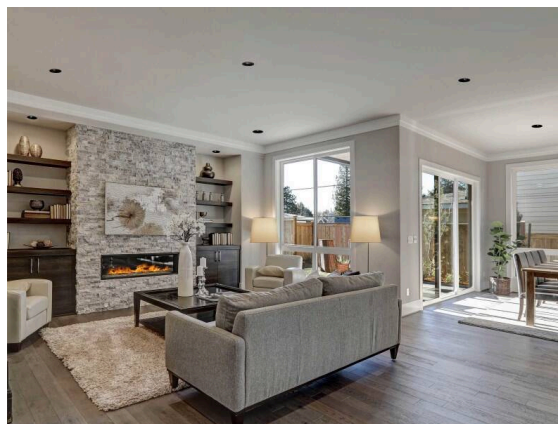


MOVA

495-6200d134965002

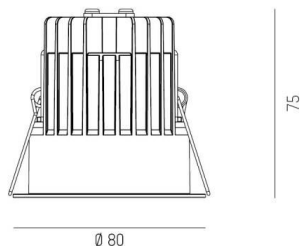
MOVA S R RECESSED SPOTLIGHT made of aluminium, black, similar to RAL 9005, decor white, high-efficiently vacuum deposited synthetic reflector beam 24°, light output direct, without converter, max. 200/350/500mA, IP20



SKETCH

 1 - 20 mm

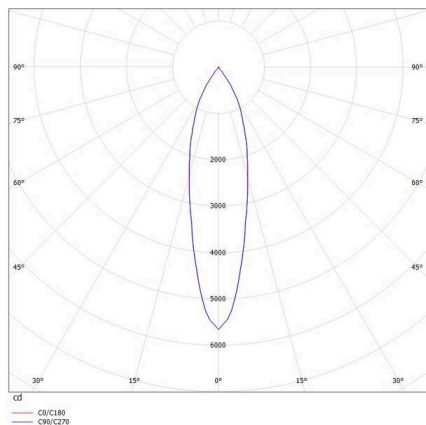
 68 mm, ET 105 mm



TECHNICAL DETAILS

Light source	LED 6W/12W/17W
Luminous flux [lm]	1170/2010/2810
Current sec. [mA]	200/350/500
Colour temperature	3000K
CRI	PREMIUM>90
Optics	vacuum deposited synthetic reflector
Converter	without converter
Light emission area	direct
Beam angle	24°
Height [mm]	75
Diameter [mm]	80
Ceiling cutout [mm]	68
Ceiling thickness [mm]	1-20
Mounting depth [mm]	105
IP protection class	IP20
IP protection class	protection cl. II
Material	aluminium
Colour of body	black
RAL	9005
Colour of decor	white
Lifetime [h]	L80 B10 50 000
Energy efficiency class	C
Net weight [kg]	0.29
EAN number	9010979837157

LIGHT DISTRIBUTION CURVE



Energy label



The values are rated values. Power and luminous flux are initially subject to a tolerance of +/- 10%.
 Colour temperature tolerance: +/- 150 K. The values apply to an ambient temperature of 25°C unless otherwise specified.