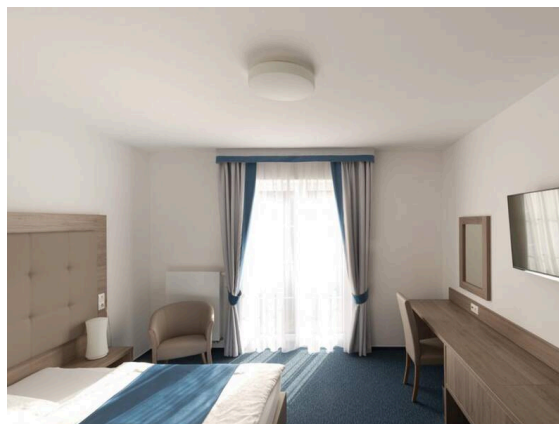


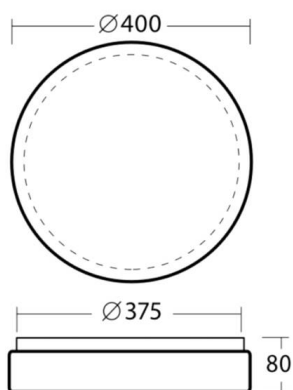
OSMONT

789-56110

DELIA E27 WALL / CEILING LUMINAIRE made of steel sheet, white, polycarbonate cover white, light output direct, dimmability: see light source, IP44 without lamp,



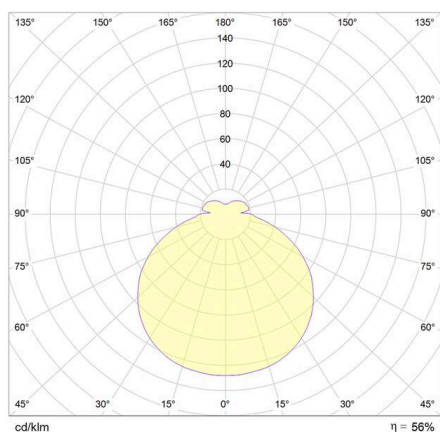
SKETCH



TECHNICAL DETAILS

Light source	AGL A60 ECO 30W
System performance [W]	2X25
Number of sockets	2x
Socket	E27
Luminous flux [lm]	see light source
Optics	polycarbonate cover
Dimmability	see light source
Light emission area	direct
Voltage	220-240V 50/60Hz
Height [mm]	80
Diameter [mm]	400
IP protection class	IP44
IP protection class	protection cl. I
IK value	IK10
Material	steel sheet
Colour of body	white
Colour of glass/shade	white
Lifetime [h]	see light source
Net weight [kg]	1.63
EAN number	8591728561109

LIGHT DISTRIBUTION CURVE



The values are rated values. Power and luminous flux are initially subject to a tolerance of +/- 10%.
Colour temperature tolerance: +/- 150 K. The values apply to an ambient temperature of 25°C unless otherwise specified.