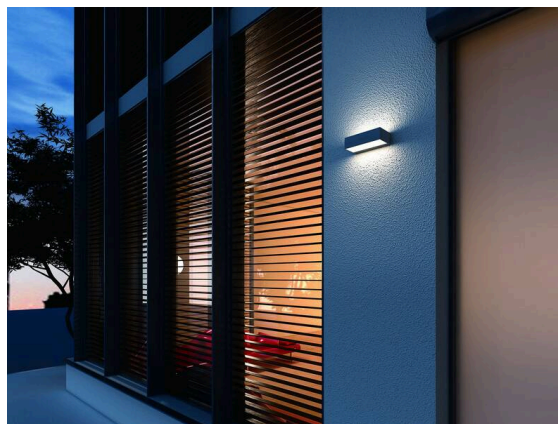


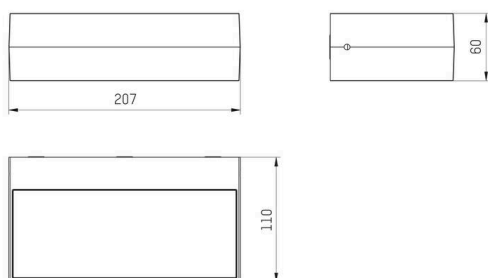
PARE

100-02190110

PARE W SURFACE MOUNTED WALL LUMINAIRE made of aluminium, anthrazite, similar to RAL 7024, polycarbonate cover beam 110°, light output direct / indirect, max. 350mA, dimmability: not dimmable, IP54



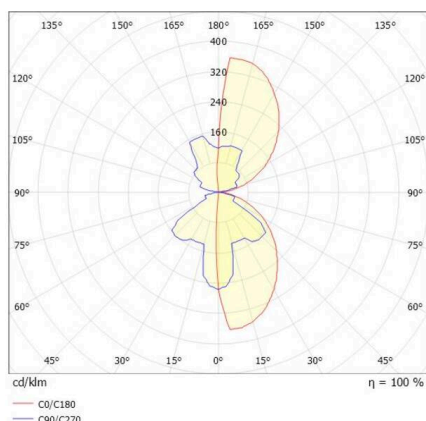
SKETCH



TECHNICAL DETAILS

Light source	LED
System performance [W]	12
Luminous flux [lm]	380
Current sec. [mA]	350
Colour temperature	3000K
CRI	>80
Optics	polycarbonate cover
Dimmability	not dimmable
Light emission area	direct / indirect
Beam angle	110°
Voltage	220-240V 50/60Hz
Length [mm]	207
Width [mm]	60
Height [mm]	110
IP protection class	IP54
IP protection class	protection cl. I
IK value	IK10
Material	aluminium
Colour of body	anthrazite
RAL	7024
Lifetime [h]	L80 B10 20 000
Energy efficiency class	C
Net weight [kg]	0.90
EAN number	9010506456639

LIGHT DISTRIBUTION CURVE



Energy label



The values are rated values. Power and luminous flux are initially subject to a tolerance of +/- 10%.
 Colour temperature tolerance: +/- 150 K. The values apply to an ambient temperature of 25°C unless otherwise specified.