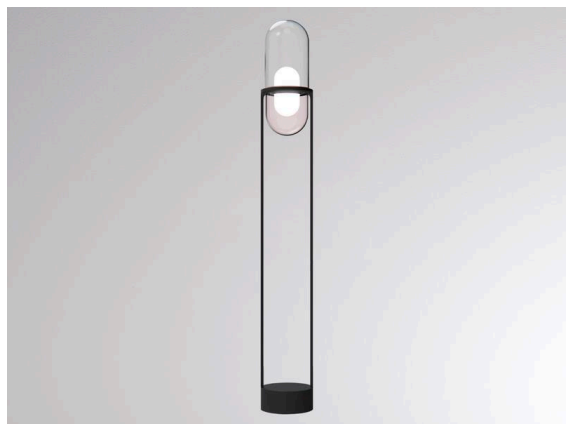


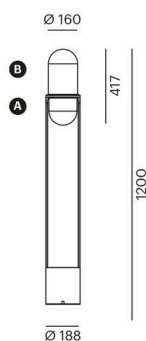
PILLE

737-60013pgtv2

PILLE F FLOOR LAMP made of aluminium, black, similar to RAL 9005, shade made of hand-blown glass rose grey, light output direct / indirect, with converter, max. 700mA, dimmability: Push Dim, cable black, synthetic fabric, IP20 Wooden base with visible grain, black painted,



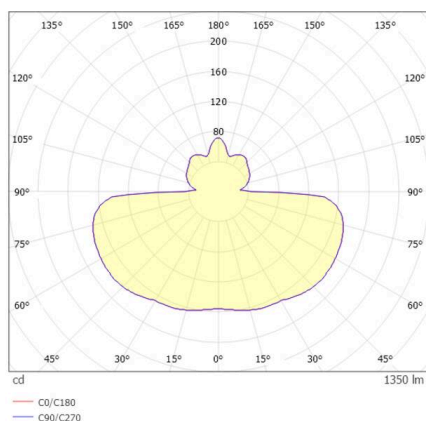
SKETCH



TECHNICAL DETAILS

Light source	LED
System performance [W]	27
Luminous flux [lm]	1350
Current sec. [mA]	700
Colour temperature	2700K
CRI	PREMIUM>90
Optics	hand-blown glass
Converter	with converter
Dimmability	Push Dim
Light emission area	direct / indirect
Voltage	220-240V 50/60Hz
Width [mm]	188
Height [mm]	1200
Diameter [mm]	188
IP protection class	IP20
IP protection class	protection cl. I
Material	aluminium
Colour of body	black
RAL	9005
Colour of glass/shade	rose grey
Cable	black, synthetic fabric
Lifetime [h]	L80 B10 50 000
Energy efficiency class	C
Number of luminaires B16A	50
Net weight [kg]	6.53
EAN number	9010979106604

LIGHT DISTRIBUTION CURVE



Energy label



The values are rated values. Power and luminous flux are initially subject to a tolerance of +/- 10%.
Colour temperature tolerance: +/- 150 K. The values apply to an ambient temperature of 25°C unless otherwise specified.