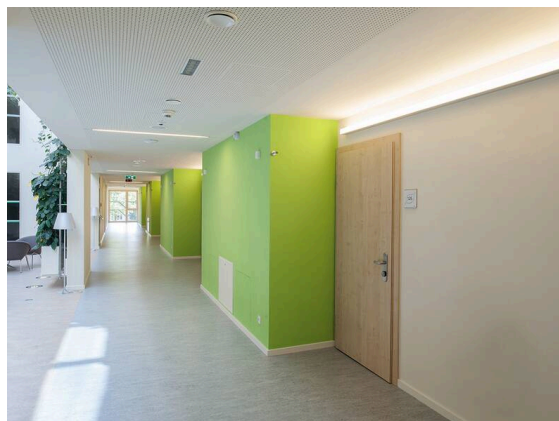


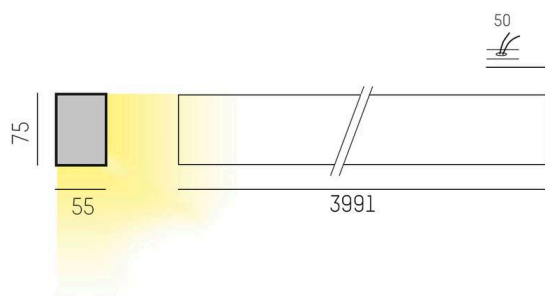
THE LINE

536-217198

THE LINE SD WALL / CEILING LUMINAIRE natural aluminium, satined PMMA opal diffuser with converter, dimmability: not dimmable, IP20



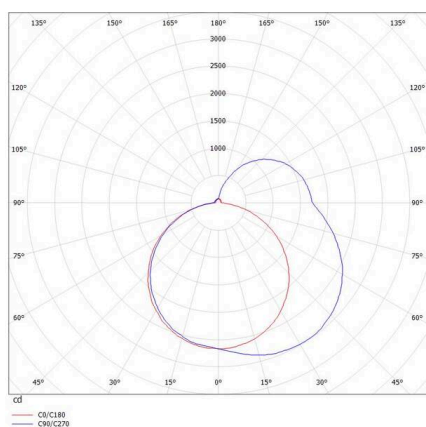
SKETCH



TECHNICAL DETAILS

Light source	LED
System performance [W]	119
Luminous flux [lm]	12740
Colour temperature	3000K
CRI	>80
Optics	PMMA opal diffuser with converter
Converter	with converter
Dimmability	not dimmable
Voltage	220-240V 50/60Hz
Length [mm]	3991
Width [mm]	55
Height [mm]	75
IP protection class	IP20
IP protection class	protection cl. I
IK value	IK02
Colour of body	natural aluminium
Lifetime [h]	L80 B10 50 000
Net weight [kg]	9.96
EAN number	9008905595998

LIGHT DISTRIBUTION CURVE



Energy label



The values are rated values. Power and luminous flux are initially subject to a tolerance of +/- 10%.  
Colour temperature tolerance: +/- 150 K. The values apply to an ambient temperature of 25°C unless otherwise specified.