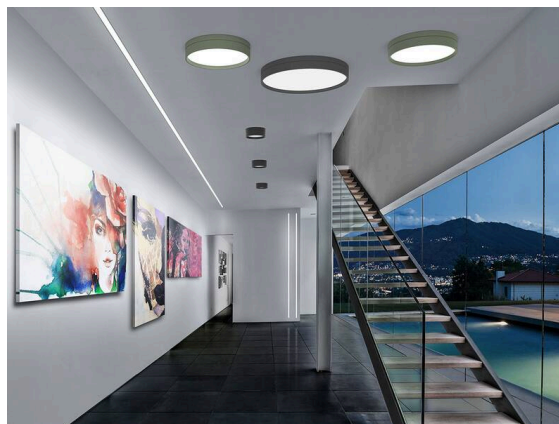


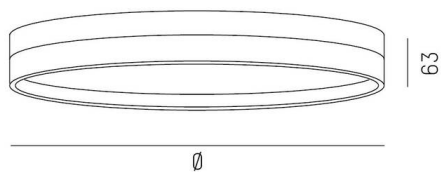
TURN ON 2

583-01111123061d000

TURN ON 2 SD WALL / CEILING LUMINAIRE made of aluminium, black, similar to RAL 9005, decor gold,opal diffuser light output direct, with converter, max. 350mA, dimmability: not dimmable, IP20

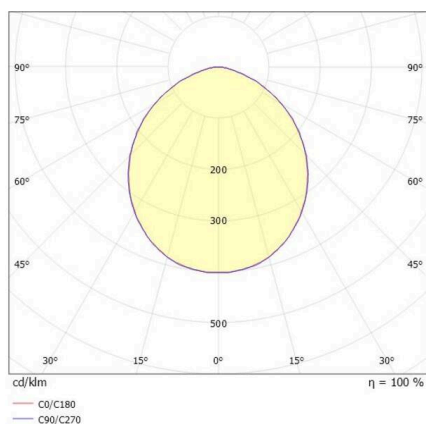


SKETCH



| | |
|---------|----------|
| SYS 8W | Ø: 110mm |
| SYS 12W | Ø: 150mm |
| SYS 14W | Ø: 300mm |
| SYS 31W | Ø: 450mm |

LIGHT DISTRIBUTION CURVE



TECHNICAL DETAILS

| | |
|---------------------------|------------------|
| System performance [W] | 8 |
| Luminous flux [lm] | 420 |
| Current sec. [mA] | 350 |
| Colour temperature | 2700K |
| CRI | >90 |
| Optics | opal diffuser |
| Converter | with converter |
| Dimmability | not dimmable |
| Light emission area | direct |
| Voltage | 220-240V 50/60Hz |
| Height [mm] | 63 |
| Diameter [mm] | 110 |
| IP protection class | IP20 |
| IP protection class | protection cl. I |
| IK value | IK06 |
| Material | aluminium |
| Colour of body | black |
| RAL | 9005 |
| Colour of decor | gold |
| Lifetime [h] | L80 B10 50 000 |
| Energy efficiency class | D |
| Number of luminaires B16A | 50 |
| Net weight [kg] | 1.02 |
| EAN number | 9010506883527 |



Energy label



The values are rated values. Power and luminous flux are initially subject to a tolerance of +/- 10%.
Colour temperature tolerance: +/- 150 K. The values apply to an ambient temperature of 25°C unless otherwise specified.