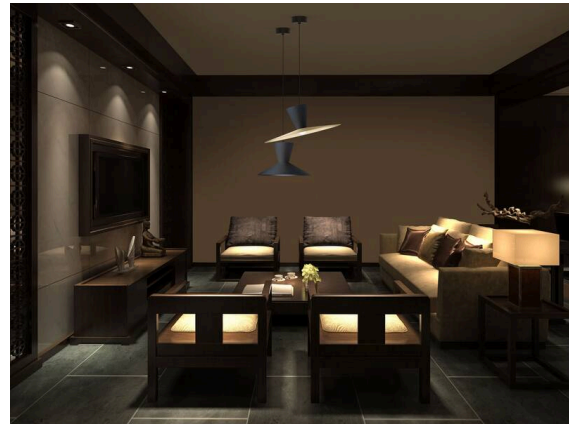


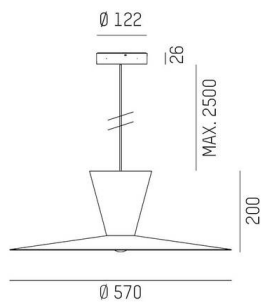
WIZARD

114-0211000658500

WIZARD L PDI SUSPENSION made of aluminium, similar to RAL 9016, aluminium shade white cooper, beam see light source, light output direct / indirect, tilting 5°, dimmability: not dimmable, cable black, fabric, adapter/ceiling base black, pendant length 2500mm, IP20 without lamp,



SKETCH



TECHNICAL DETAILS

| | |
|----------------------------------|-------------------|
| Light source | AGL A60 7W |
| Number of sockets | 1x |
| Socket | E27 |
| Luminous flux [lm] | see light source |
| Colour temperature | see light source |
| CRI | see light source |
| Optics | aluminium shade |
| Dimmability | not dimmable |
| Light emission area | direct / indirect |
| Beam angle | see light source |
| Voltage | 220-240V 50/60Hz |
| Length [mm] | 570,1 |
| Height [mm] | 208 |
| Length pendant [mm] | 2500 |
| Diameter [mm] | 570 |
| IP protection class | IP20 |
| IP protection class | protection cl. I |
| Material | aluminium |
| RAL | 9016 |
| Colour of glass/shade | white cooper |
| Colour of adapter / ceiling base | black |
| Cable | black, fabric |
| Net weight [kg] | 1.61 |
| EAN number | 9010506958638 |



Energy label



The values are rated values. Power and luminous flux are initially subject to a tolerance of +/- 10%.
Colour temperature tolerance: +/- 150 K. The values apply to an ambient temperature of 25°C unless otherwise specified.