

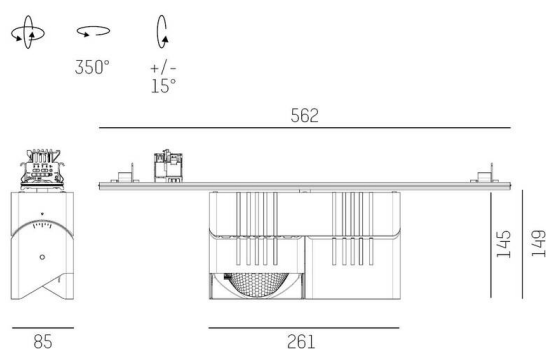
TRAIL

610-135203124755d

TRAIL ARTIS 2 MATRIX MOUNTING RAIL LIGHT INSERT made of aluminium, white, similar to RAL 9016, high-efficiently vacuum deposited synthetic reflector beam double asymmetric, light output direct, swiveling 350°, tilting 30°, with converter, max. 1050mA, dimmability: DALI, through wiring 7-polig, adapter/ceiling base white, IP20 with the option of attaching the Lightguider for lighting the 3rd level and 3-level electrically adjustable floor matrix



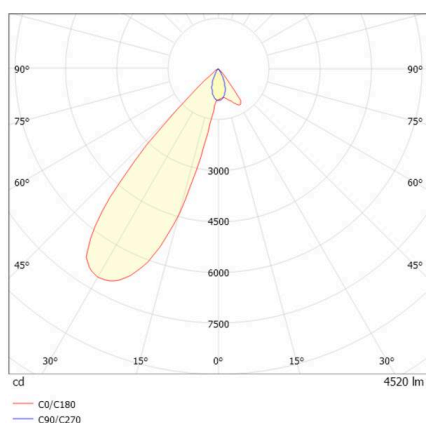
SKETCH



TECHNICAL DETAILS

| | |
|----------------------------------|--------------------------------------|
| Light source | LED |
| System performance [W] | 80 |
| Luminous flux [lm] | 9040 |
| Current sec. [mA] | 1050 |
| Colour temperature | 3500K |
| CRI | PREMIUM >90 |
| Optics | vacuum deposited synthetic reflector |
| Converter | with converter |
| Dimmability | DALI |
| Light emission area | direct |
| Beam angle | double asymmetric |
| Voltage | 220-240V 50/60Hz |
| Through wiring | 7-polig |
| Length [mm] | 564,9 |
| Width [mm] | 85 |
| Height [mm] | 149 |
| IP protection class | IP20 |
| IP protection class | protection cl. I |
| Material | aluminium |
| Colour of body | white |
| RAL | 9016 |
| Colour of adapter / ceiling base | white |
| Lifetime [h] | L80 B10 50 000 |
| Energy efficiency class | D |
| Number of luminaires B16A | 24 |
| Net weight [kg] | 2.83 |
| EAN number | 9010870133266 |

LIGHT DISTRIBUTION CURVE



Energy label



The values are rated values. Power and luminous flux are initially subject to a tolerance of +/- 10%.
Colour temperature tolerance: +/- 150 K. The values apply to an ambient temperature of 25°C unless otherwise specified.