

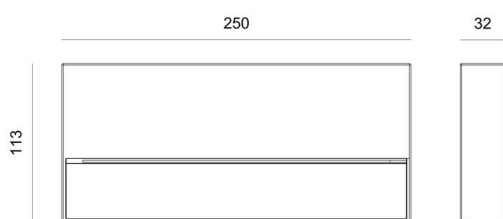
CADO

333-00053

CADO W SURFACE MOUNTED WALL LUMINAIRE made of aluminium, anthrazite, similar to RAL 7024, transparent glass beam asymmetric, light output direct, with converter, max. 700mA, dimmability: on/off, IP65



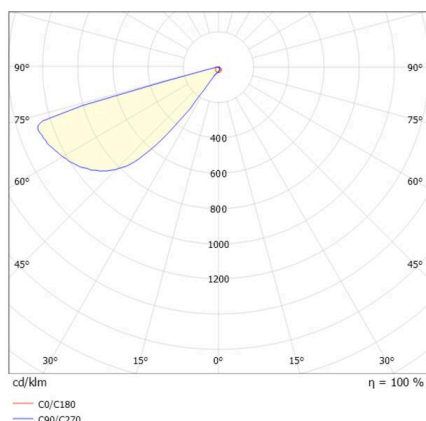
SKETCH



TECHNICAL DETAILS

Light source	LED
System performance [W]	8,5
Luminous flux [lm]	195/200
Current sec. [mA]	700
Colour temperature	2700/3000K
CRI	>90
Optics	transparent glass
Converter	with converter
Dimmability	on/off
Light emission area	direct
Beam angle	asymmetric
Voltage	220-240V 50/60Hz
Length [mm]	250
Width [mm]	113
Height [mm]	32
IP protection class	IP65
IP protection class	protection cl. I
Material	aluminium
Colour of body	anthrazite
RAL	7024
Ambient temperature	from -20° to +40°
Energy efficiency class	E
Number of luminaires B16A	224
Net weight [kg]	1.09
EAN number	9010870414471

LIGHT DISTRIBUTION CURVE



Energy label



The values are rated values. Power and luminous flux are initially subject to a tolerance of +/- 10%.  
Colour temperature tolerance: +/- 150 K. The values apply to an ambient temperature of 25°C unless otherwise specified.