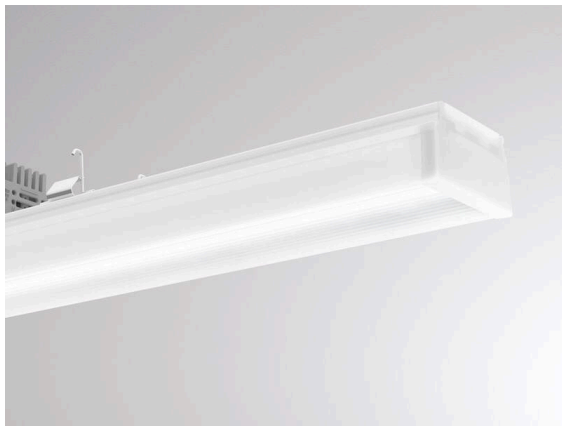


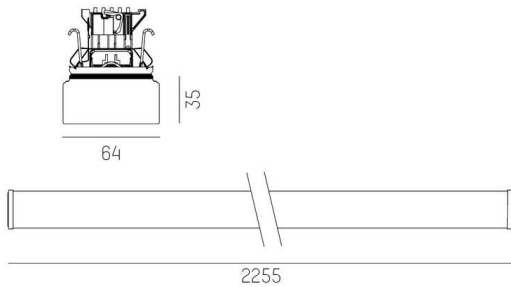
TRAIL

610-3268011514052

TRAIL LIGHT INSERT CUBIC MB UGR MOUNTING RAIL LIGHT INSERT made of aluminium, white, similar to RAL 9016, PMMA diffuser cubic beam 60°, light output direct / indirect, UGR <19, with converter, max. 250mA, dimmability: DALI 2, through wiring 7-polig, IP54



SKETCH



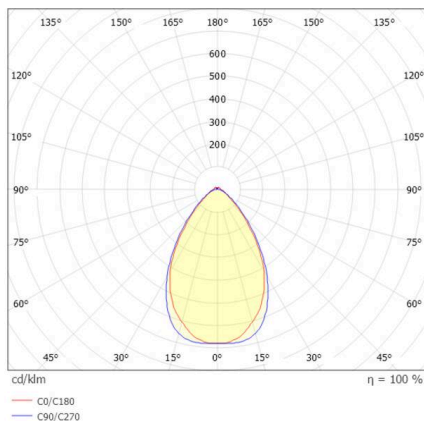
TECHNICAL DETAILS

Light source	LED
System performance [W]	47
Luminous flux [lm]	8340
Current sec. [mA]	250
Colour temperature	4000K
CRI	>80
UGR	<19
Optics	PMMA diffuser cubic
Converter	with converter
Dimmability	DALI 2
Light emission area	direct / indirect
Beam angle	60°
Voltage	220-240V 50/60Hz
Through wiring	7-polig
Length [mm]	2255
Width [mm]	64
Height [mm]	35
IP protection class	IP54
IP protection class	protection cl. I
IK value	IK02
Material	aluminium
Colour of body	white
RAL	9016
Lifetime [h]	L90 B10 100 000
Ambient temperature	from -20° to +50°
Energy efficiency class	C
Number of luminaires B16A	21
IFS	True
Net weight [kg]	3.30
EAN number	9010870715677



Energy label

LIGHT DISTRIBUTION CURVE



The values are rated values. Power and luminous flux are initially subject to a tolerance of +/- 10%.  
Colour temperature tolerance: +/- 150 K. The values apply to an ambient temperature of 25°C unless otherwise specified.